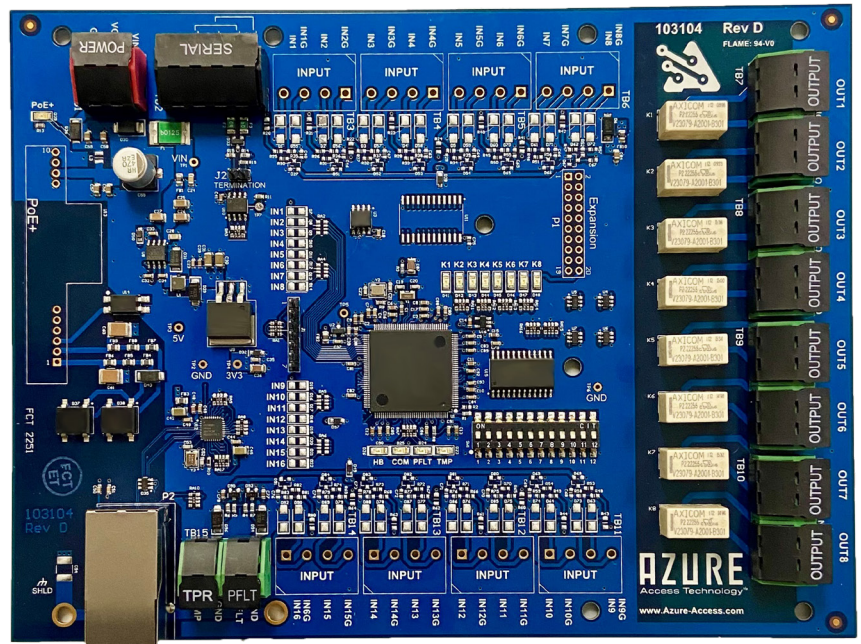


# SECURITY DESIGNED WITH YOU IN MIND

## BLU-08-N



Azure Access Technology BLU-08N  
Downstream Output Board (8 Outputs, Network Connection)



### SECURITY

- TLSv1.2 A
- OSDP
- AES 128/256
- Encrypted Firmware

### REGULATORY

- UL 294, UL294B, UL1076, UL2610 (Hardware)
- ULC/ORD C1076
- CE Compliant
- FCC Part 15 Class A
- RoHS



12 Aqueduct Street, 3rd floor  
Rochester, New York 14614  
866 680.8346  
info@go-mavin.com

[go-mavin.com](http://go-mavin.com)

Extend your Access Control system with the Azure BLU-08-N's eight relay outputs. The large number of outputs enables the full control of additional doors, monitoring extensive sensor networks and elevator control. The BLU-08-N communicates with OSDP protocols, fully encrypted. Relative to the quantity of hardware interfaces, the BLU-08-N consumes minimal power.

### FEATURES

- FULLY ENCRYPTED COMMUNICATIONS**
  - > Whether network or serial, communication to Azure Intelligent Controllers (ICs) are secure.
- 8 RELAY OUTPUTS**
  - > Configurable pulse/activation times
- LED STATUS & DIAGNOSTICS**
  - > LEDs for all onboard activity and hardware interface statuses
  - > Visual diagnostics via LEDs
  - > Outputs only
  - > Ethernet / RS485
- ENERGY EFFICIENT**
  - > Low power consumption compared to other panels with similar hardware interfaces

# MAVIN SECURITY MANAGEMENT PLATFORM



## GENERAL INFORMATION

- INDUSTRIAL operation and storage temperature (-40°C to +85°C)
- 5% to 95% humidity
- Dimensions: 7.5in (190.5mm) x 5.5in (139.7mm) x 0.75in (19mm)
- Weight: 0.4 pounds (181.5 grams)

## INPUT POWER

- 12-24 VDC; 200mA Max current
- Max current: 200mA board only

## ONBOARD HARDWARE INTERFACES

- 8 Form-C Relay Outputs
  - > 2A @ 30VDC MAX rating
- Up to 1 Network Port
  - > 10/100 Fast Ethernet
- 1 Upstream RS485 Comm Port
  - > 9,600 to 115,200 baud
  - > 4-wire & 2-wire interface supported
- DIP switches for configuring hardware interfaces
  - > Configure input supervision type, serial com address, & baud rate.

## SYSTEM DIAGRAM

