

SECURITY DESIGNED WITH YOU IN MIND

BLU-R12M

Azure Access Technology BLU-R12M
Downstream Reader- Interface Board
(2 Readers, 6 Supervised Inputs & 4 Relay Outputs)



SECURITY

TLSv1.2 A

OSDP

AES 128

Encrypted Firmware

REGULATORY

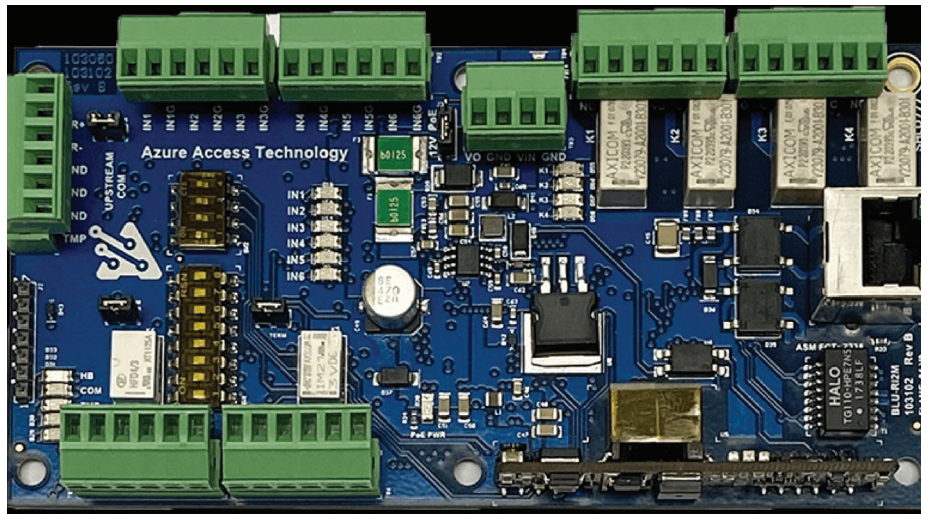
UL 294, UL294B, UL1076, UL2610
(Hardware)

ULC/ORD C1076

CE Compliant

FCC Part 15 Class A

RoHS



The BLU-R12M is the next generation, downstream reader interface board for managing two doors plus auxiliary inputs and outputs. The board is a two-sided, low-profile design to save space and allow for installation in a triple-gang box at the "edge", close to the door.

FEATURES

□ FULLY ENCRYPTED COMMUNICATIONS

> Whether network or serial, communication to Azure Intelligent Controllers (ICs) are secure.

□ 2 READER PORTS

> Both reader ports connect either TTL (Weigand etc.) or RS485 (OSDP) readers
> Supports paired readers

□ 6 FLEXIBLE ALARM INPUTS

> Supervised or Unsupervised
> Supports pre-defined standards and custom input-supervision values

□ 4 RELAY OUTPUTS

> Configurable pulse/activation times

□ LED STATUS & DIAGNOSTICS

> LEDs for all onboard activity and hardware interface statuses

□ MULTIPLE ASSEMBLY OPTIONS

> Ethernet / RS485



12 Aqueduct Street, 3rd floor
Rochester, New York 14614
866 680.8346
info@go-mavin.com

go-mavin.com

MAVIN SECURITY MANAGEMENT PLATFORM



FEATURES

- > Full IO / Inputs only / Outputs only
- > Ethernet / RS485
- ☐ **HIGH-PRECISION ALARM INPUTS**
 - > Supervised Input circuitry is designed with application-specific components to maintain stability and reliability in even the most extreme conditions
 - > A combination of Software and Hardware filtering suppresses noise and eliminates false alarms
- ☐ **ENERGY EFFICIENT**
 - > Low power consumption compared to other panels with similar hardware interfaces

GENERAL INFORMATION

- ☐ INDUSTRIAL operation and storage temperature (-40°C to +85°C)
- ☐ 5% to 95% humidity
- ☐ Dimensions: 5.4in (137.2mm) x 2.75in (69.9mm) x 0.88in (22.35 mm)
- ☐ Weight: 0.28 pounds (126 grams)

INPUT POWER

- ☐ 12 VDC
- ☐ Auxiliary output power port can supply up to 1 Amp to power door strikes or other peripheral devices.

ONBOARD HARDWARE INTERFACES

- ☐ 2 Reader Ports supporting both TTL and RS485
 - > Single-wire and two-wire LED control support
 - > Open collector buzzer output
- ☐ 6 Configurable Supervised/Unsupervised Inputs
 - > 2A @ 30VDC MAX rating
- ☐ 4 Form-C Relay Outputs
 - > 1 Unsupervised Cabinet Tamper
- ☐ Up to 1 Network Port
 - > 10/100 Fast Ethernet
- ☐ 1 Upstream RS485 Comm Port
 - > 9,600 to 115,200 baud
 - > 2-wire interface
- ☐ DIP switches for configuring hardware interfaces
 - > Serial COM and Network.

SYSTEM DIAGRAM

